

# FEATURED PRODUCTS



**PAGE 27**  
HIGH ACCURACY  
PRISM ASSEMBLY



**PAGE 22**  
MONITORING PRISM  
WITH MAGNETIC BASE



**PAGE 20**  
SPHERE PRISM  
MONITORING KIT



**PAGE 24**  
360° ROTATABLE &  
TILTABLE PRISM



**PAGE 41**  
HEIGHT-ADJUSTABLE  
SECURITY CAGE



**PAGE 42**  
SELF-LEVELING  
TRIBRACH



**PAGE 31**  
SCANNER SPHERES  
WITH MAGNET KIT



**PAGE 33**  
PREMIUM LASER  
SCANNER TRIPOD



**PAGE 4**  
ZOOM 95  
TOTAL STATION



**PAGE 37**  
ALL-CARBON  
FIBER W/ CLAMP



Omni has developed several partnerships with our extensive domestic and international customers. We would like to sincerely thank each of these customers for their loyalty and patronage.

## CONTENT

### EQUIPMENT

- TOTAL STATIONS	4
- THEODOLITES	7
- GNSS & DATA COLLECTORS	8
- AUTO LEVELS	10
- LOCATORS	11
- PIPE LASERS	12
- GRADE LASERS	13
- ROTARY LASERS & RECEIVERS	14
- LINE & POINT LASERS	16
- COLLIMATORS	17

### PRISMS

- SMR LASER TRACKERS	20
- PRISM SPHERES	20
- MONITORING PRISMS	22
- RAIL & ROAD PRISMS	23
- TILTING & ROTATABLE	24
- CANISTERS	25
- MINI PRISMS	26
- PRISM ASSEMBLIES	27
- TRAVERSE SETS	28

### REFLECTORS & TARGETS

- REFLECTORS	29
- DRONE TARGETS	30
- LASER SCANNER ACCESSORIES	31

### SURVEYING ACCESSORIES

- TRIPODS	32
- BIPODS	36
- PRISM POLES	37
- ROVER RODS	39
- LEVELING RODS	40
- SECURITY & MOUNTS	41
- ADAPTERS & TRIBRACHS	42
- INSTRUMENT BRACKETS	43
- BACKPACKS & BAGS	44
- MEASURING TAPES AND RODS	45
- MISCELLANEOUS	46



# TOTAL STATIONS

## Zoom95

Featuring advanced STReAM360 technology, this one-person total station substantially minimizes the time of any survey task and maximizes your performance and accuracy. Combined with the X-PAD field software, the user-friendly and flexible solution makes it easy to start digitizing your construction site. It also aims accurately at any prism, without the need to look through the telescope. Once locked onto, the instrument remains accurately aimed even on fast moving targets.



### What's included in the package?

USB memory stick, Li-Ion battery, charger, tribrach, bluetooth handle, 360° prism, USB cable, and hard case.

## Zoom50

The new flagship within the manual total station portfolio, is equipped by default with an extra-large, high resolution colour and touch display providing an excellent readability under all conditions. Options:  
-500/100m reflectorless  
-1"/2"/5" accuracy



## Zoom10

The Zoom10 has been created following your field work requirements. Looking for a user friendly and cost effective manual total station? The Zoom10 is made for you  
Options:  
-350m reflectorless  
-2" accuracy



## Zoom75

The Zoom75 robotic TPS is a smart, affordable choice for both novice and experienced surveyors. As a reliable one-person total station, the Zoom75 has an optional long-range Bluetooth handle, along with the GeoTRAIL function that finds your prism based on the GNSS position transferred from your field controller.



### TECHNICAL DATA

Screen	Large 5" VGA (second screen option available)
Magnification	30x
Non-Prism Range	1000m and 500m
Ports	Serial, USB, Bluetooth, external power, and WLAN
Accuracy options	1sec, 2sec, 3sec, and 5 sec models available

## Zoom40

Features an open WinCE platform that can integrate with third party developments and remote communication. The flexibility to run X-PAD, FieldGenius, Carlson SurvCE or any other localised field software onboard the Zoom40 with its high resolution graphical colour and touch display allows you to work in the way that best fits to your needs.

### TECHNICAL DATA

Screen	3.5" Quarter-VGA colour touch
Non-Prism Range	500m / 1000m
Keyboard	Full alphanumeric
Accuracy Options	2sec and 5sec models available

## 152M Manual Total Station

- Dual LCD keyboard with 24 Alphanumeric keys
- Angle Accuracy: 2"
- Display digital, four lines LCD
- Measurement distance (single prism) 9,842ft
- Measurement distance (three prism) 16,404ft
- 30x Magnification
- Ports RS-232C, USB
- 3000mAh Ni-H battery



## Zoom45

This manual total station for construction surveyors and operator crews thanks to its fast point measurements, durability, and simple operation. Perfect for job sites, the robust Zoom45 runs X-PAD Ultimate field software on a large display, great for working with graphical tools to quickly complete layout tasks.

### TECHNICAL DATA

Screen	5" WVGA colour and touch LED backlight
Non-Prism Range	500m / 1000m
Keyboard	Full numeric including 10 function keys
Accuracy Options	2sec and 5sec models available

## 952R Windows CE Total Station

- Windows CE 6.0 Operating System
- Color Touch Screen
- Reflectorless 600m/800m
- Absolute coding angle measurement
- Bluetooth, RS232, Mini USB, USB, and SD Card
- 1G Ram
- Dual-axis Compensator
- Angle Accuracy: 2"



NEW



1



RIS / RIS ONE

RIS RIS ONE

non-prism range  
1500m

accuracy (prism mode)  
2mm + 2ppm 1mm + 1ppm

2



RNS

3



RCS

4



RQS

#	Model	Accuracy	Plummet	Guide Light	I/O Interface
1	RIS ONE	1"	UltraPlumb	Y	MiniUSB, SD Card, USB 2.0, RS232
1	RIS OP	2"	Optical	N	MiniUSB, SD Card, USB 2.0, RS232
2	RNS	2"	Optical/Laser	N	Type-C (OTG), RS232, TF Card, SIM Card
3	RCS	2"	UltraPlumb	Y	USB 2.0
4	RQS	2"	Optical/Laser	N	USB 2.0

NEW



DET-2 Zipp02

The DET-2 by Spectra is designed to give accurate angle measurements of 2". It's affordable, versatile and easy to use. It comes equipped with a plumb bob, NiMH rechargeable battery pack and charger, alkaline battery pack, adjustment tools, rain hood, user guide, and hard-shell carrying case.

With vertical compensation and 2" accuracy the Zipp02 by Geomax provides you with the precision required for your most demanding jobs at an affordable price without adding complexity. The Zipp02 is the tool of your choice when it comes to checking angles, alignments, grade work and short range leveling.



LASER AND DIGITAL

DT8-05LS & DT8-05LP

The DT8-05LS 5-second Laser sight digital theodolite comes with optical plummet for centering over point. Laser beam is built in for easy and accurate alignment.

The DT8-05LP 5-second digital theodolite comes with laser plummet for centering of point. Simply push the button functions to get precise LCD digital readouts.

Includes:

- DT8-05LS/P Theodolite
- NiMh Rechargeable Battery Pack/Charger
- Alkaline Battery Pack
- Tool Kit
- Rain Hood
- Plumb Bob and Carrying Case
- Manual



OMNI's theodolites feature a rugged body design that is able to withstand harsh environments. Its operating time of 10 hours ensures you have the battery you need to get the job done. Horizontal and vertical angles can be observed simultaneously on the large LCD displays.

Model	Accuracy	Type
5610-02L	2 sec	Laser
5610-05L	5 sec	Laser
5610-02	2 sec	Digital
5610-05	5 sec	Digital

5610-02L/05L & 5610-02/05

# GNSS

No matter the job or the environment, GeoMax antennas provide high measurement accuracy and easy handling. Thanks to the knowledge and experience of their parent company Hexagon, they are able to offer proven state-of-the-art technology. Geomax offers the newest technology for the highest productivity.



	Zenith06	Zenith16	Zenith60
<b>Constellations</b>	GPS, GLONASS, Galileo, BeiDou, QZSS, SBAS		
<b>Tilt Compensation</b>	X	X	30° tilt
<b>Cellular Network</b>	Controller Internal		4G LTE*
<b>Internal UHF</b>	X	Optional	Optional
<b>Internal Memory</b>	Removable microSD card		8GB
<b>Battery</b>	Li-Ion 6.12Ah	Li-Ion 2.6Ah	Li-Ion 3.4Ah

\*QUECTEL EG25-G, LTE FDD, LTE TDD, UMTS, GSM



	REN01	R93i	V90 BX Base + Rover
<b>Constellations</b>	GPS, GLONASS, Galileo, BeiDou, QZSS		GPS, GLONASS, Galileo, BeiDou, QZSS, SBAS, BDS
<b>Tilt Compensation</b>	<3cm 30° tilt / <5cm 60° tilt		30° Tilt
<b>Cellular Network</b>	Yes*	Optional	4G
<b>Internal UHF</b>	X-link 3W	X-link 2W	1W, 2W, 4W adjustable
<b>Internal Memory</b>	8GB	4GB	16GB
<b>Battery</b>	Li-Ion 10.0Ah	Li-Ion 6.8Ah	7.4V, 5000mAh Lithium-ion

\*WCDMA, CDMA2000, TD-LTE, FDD-LTE, GPRS, EDGE

**REN01:** Comprehensive GNSS receiver with screen and long range internal radio.

**R93i:** 4G/ 2W Radio/ IMU/ wifi All Onboard. Comprehensive GNSS receiver integrated with internal UHF radio.

**V90 BX Base + Rover:** High accuracy Base + Rover complete set with 800 Channels

**NEW**



## Zenius08

From survey to layout to checks, make the most of your time on site by viewing and working with your GeoMax TPS and GNSS data on the rugged **Zenius08** tablet. Made for your toughest and longest days in the field, the Zenius08 runs X-PAD software and syncs to all your GeoMax sensors.

Specs	Description
Display	8" Touchscreen
Keyboard	14 keys
Bluetooth	5.1
Cellular	5G Cellular modem
Internal Storage	8GB Ram, 256 GB
Camera	8MP Front, 32MP Back
Operating Time	Up to 15 hours

## DATA

# COLLECTORS



**N80T**

The **N80T Android GIS Tablet** integrates Ublox high-precision GNSS module, powerful satellite antenna, 4G Network module and various sensors, bringing high efficiency and productivity to mobile field work from different industry and applications such as: GIS data collection, mapping, construction, powerline, and more.

Specs	Description
Display	8" Touchscreen
OS	Android 10
Bluetooth	4.2
Cellular	GSM, CDMA, EVDO, WCDMA
Internal Storage	4GB Ram, 64GB
Camera	8MP Front, 16MP Back

## Spectra Precision AL Series



The AL series of automatic levels from Spectra Precision are designed for a variety of elevation control and alignment tasks including general building construction, cut and fill measurements, area leveling, and landscaping.



### DSZ2-10

It features a rugged, all-metal housing. It has a button for compressor checking. The use of automatic compensator speeds up the work and improves accuracy.



### PM2632

This model has a sealed construction for use in various weather conditions and it includes its carrying case, adjusting pin, Allen wrench, plumb bob and instruction manual.

Model	Magnification	Compesator	Accuracy @50m	Aperture
AL32A	32x	Air	0.5mm	30mm
AL28M	28x	Magnetic	2.5mm	30mm
AL24M	24x	Magnetic	2.5mm	30mm
AL24A	24x	Air	1.2mm	30mm
AL20M	20x	Magnetic	2.5mm	30mm

Model	Magnification	Compesator	Accuracy
PM2632	32x	Air	2.0mm
DSZ2-10	34x	Air	2.0mm



# AUTO LEVELS

## ZAL Series

The GeoMax ZAL Series are dependable and durable tools, specifically designed for construction professionals. From daily leveling tasks to high accuracy, the ZAL Series is your first choice where robustness, comfort and accuracy count. It simply "works when you do!"



Model	Magnification	Compesator	Accuracy	Aperture
ZAL330	30x	Magnetic	1.2mm	40mm
ZAL328	28x	Magnetic	1.5mm	40mm
ZAL324	24x	Magnetic	2.0mm	36mm
ZAL320	20x	Magnetic	2.5mm	30mm
ZAL232	32x	Air	1.9mm	40mm
ZAL224	24x	Air	2.0mm	30mm
ZAL220	20x	Air	2.5mm	30mm

# LOCATORS

## Geomax Ezicat i750xf 60Hz

Fully integrated GPS, Depth estimation, data logging, Bluetooth®, Automatic pinpointing, Hazard zone, Signal strength indicator, Service due indicator. Modes: Power (default), Radio, Auto, 8kHz, 33kHz, 512kHz, 640kHz

## GeoMax EZiCAT i550 60Hz

Depth Estimation, Automatic Pinpointing, Hazard Zone, Pinpoint Assist, Signal Strength Indicator, Service Due Indicator. Modes: Power (default), Radio, Auto, 8kHz, 33kHz

## EZiCAT i750xf



## EZiCAT i550



## Zeta125

The Zeta125 Series give you the flexibility to choose a device that perfectly fits your needs. With the outstanding grade range from -10% to 40%, the Zeta125 is very versatile.

The Zeta125 fits in tight bends and narrow manholes. Due to its slim housing, it is suitable for pipes with 125 mm (5") diameter.



	Zeta125G	Zeta125
Laser Beam	Green	Red
Laser Class	2M	2
Self-leveling Range	-15% to +45%	
Protection	IP68	
Battery Life	up to 40h	
Operation Range	< 200 m (656')	

## Zeta125



# PIPE LASERS

Performance to match your high-level needs.

The Premium Pipe Laser Line Premium performance for good reason.

Spectra Precision is the pioneer for Pipe Lasers. The DG813 and DG613G include the latest technology and deliver the most productive pipe laying experience.

## DG813



## DG613/DG613G



	DG813	DG613G	DG613
Laser Beam	Red	Green	Red
Laser Class	2	2	2
Self-leveling Range	-12% to +40%	-12% to +40%	-12% to +40%
Protection	IP68	IP68	IP68
Battery Life	40h	30h	30h
Operation Range	150m	150m	150m

# GRADE LASERS

## UL633N



## GL722



## GL720



Model	Operating Diameter	Accuracy	IP Class
UL633N	150 m (490 ft)	1/8in at 30m 20 arc seconds	IP67
GL722	450 m (1500 ft)	1/4in at 30m 4.6 arc seconds	IP67
GL720	900 m (3,000 ft)	3/64in at 30m 8 arc seconds	IP66

## GL622IR



## GL622N



## GL1425C



## GL710



## GL612N



## GL412N



Model	Operating Diameter	Accuracy	IP Class
GL622IR	800 m (2600 ft)	1/16in @ 100 ft 10 arc seconds	IP67
GL622N	Approx. 800 m (2600 feet) with detector	1/16in @ 100 ft 10 arc seconds	IP67
GL1425C	800 m (2600 ft)	1/16in @ 100 ft 10 arc seconds	IP66
GL710	900m (3,000 feet)	1/32in @ 100 ft 10 arc seconds	IP66
GL612N	Approx. 800 m (2600 feet) with detector	1/16in @ 100 ft 10 arc seconds	IP67
GL412N	800 m (2600 feet)	1/16in @ 100 ft 10 arc seconds	IP66

# ROTARY LASERS

GL622IR



GL622N



GL1425C



GL710



Model	Self leveling Range	Range	IP Class	Laser Type
Zone60 DG	15%	900m	IP67	635 nm (visible) / class 1
Zone60 HG	8%	900m	IP67	635 nm (visible) / class 1
Zone20 HV	±5°	900m	IP67	635 nm (visible) / class 2
Zone20 H	±6°	900m	IP67	635 nm (visible) / class 1

LL500



LL300S



LL300N



LL100N



Model	Self leveling Range	Range	IP Class	Laser Type
LL500	±11 arc minutes	500m	IP54	670nm visible, Class 2
LL300S	±5 degrees	800m	IP66	650 nm, Class 2, <3,4mW
LL300N	±5 degrees	500m	IP66	650 nm, Class 2, <3,4mW
LL100N	±5 degrees	350m	IP54	650 nm visible, Class 2

# LASER RECEIVERS

LR20



LR30/W



LR50/W



LR60/W



Model	Display Channels	(Fine) Accuracy Center	Vertical Reception	Remote Control
LR20	5	5mm (0.20 in)	203mm (8 in.)	n/a
LR30/LR30W	5	5mm (0.20 in)	171mm (6.75 in.)	Yes
LR50/LR50W	5	5mm (0.20 in)	171mm (6.75 in.)	Yes
LR60/LR60W	9	10mm (0.40 in)	222mm (8.75 in)	Yes

HR1220



CR700



HL760/U



HL700



HL450



HR320



HR150U



Model	Laser Detection Height	Acceptance Angle	Battery Life
HR1220	127.0 mm (5 in.)	N/A	40+ hours
CR700	270.0 mm (5 in.)	200° minimum	60+ hours
HL760/HL760U	127.0 mm (5 in.)	± 45° minimum	60+ hours
HL700	127.0 mm (5 in.)	± 45° minimum	60+ hours
HL450	102.0 mm (4 in.)	± 45° minimum	70+ hours
HR320	50.8 mm (2 in.)	90°	70+ hours
HR150U	50.8 mm (2 in.)	90°	70+ hours

# LINE & POINT LASERS

LT58G



LT56



LT52R/G



LP51/G



Model	Working Range	Accuracy	Beam Color	Points/Intersec
LT58G	100ft (30m)	±1/8in @ 50ft (3.0mm @ 15m)	Green	6
LT56	80ft (25m)	±1/8in @ 50ft (3.0mm @ 15m)	Red	6
LT52R/LT52G	100ft (30m) Lines 200ft (60m) Points	±1/8in @ 50ft (3.0mm @ 15m)	Red/Green	6
LP51/LP51G	100ft (30m)	±3/16in @ 50ft (3mm @ 10m)	Red/Green	5

OM100LP



OM8220MMD/CD



## OM100LP

Omni's 25x laser plummet is a high precision instrument with both up and down beams. Its easy to locate points vertically above and directly below a reference point. Its laser is sharp and clear. Its brightness and focus is adjustable. The Laser Spot is safely visible from the eyepiece and the laser working distance is 100m.

## OM8220MMD/CD

Both models (magnetic and clamp) can be attached to the blade of a dozer or the arm of an excavator. They also feature 360 degree reception, length of receiving windows 25cm, detects beams of any brand rotating laser levels, and the metal housing is also waterproof and dustproof.

# COLLIMATORS

W550-F4



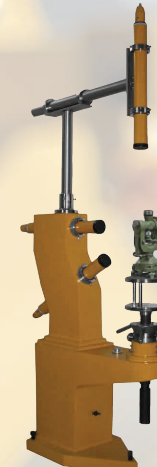
F420-4T



F550-D3



F550-TD-3



F420-3T



F550-2T

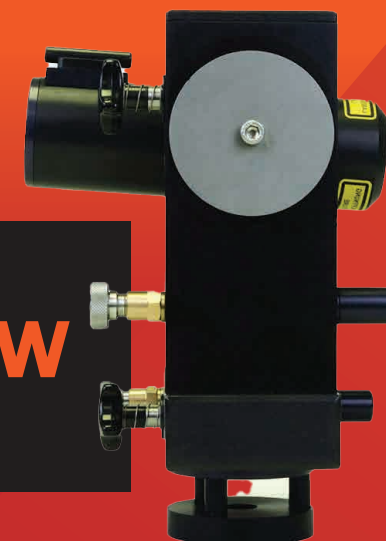


	W550-F4	F420-4T	F550-D3	F420-3T	F550-TD-3	F550-2T
Effective Aperture	55mm	55mm	57mm	57mm	57mm	57mm
Focal Length	550mm	420mm	550mm	420mm	550mm	550mm
Precision	20"	30"	30"	30"	30"	30"
Resolution	3"	3"	3"	3"	3"	3"
Magnification	5.7~7x	5.7~7x	5.7~7x	5.7~7x	5.7~7x	5.7~7x
Total Weight	340kg	140kg	200kg	140kg	230kg	110kg

## TUNNELING LASER TL-80

The Tunneling laser TL-80 emits a laser beam as reference axis. It's equipped with a horizontal and vertical rotation axis system with clamp and fine adjustment knob for quick and exact fine adjustment. The tunnelling laser can be used on its own or in combination with a traversing system.

NEW



Laser class	3R, P < 5 mW
Laser	Diode visible red 635 nm
Laser range	up to 500 m
Beam diameter at laser	at laser 13 mm
Power supply	10 to 14 V DC/0.1 A
Weight	1.8 kg



# 360° PRISMS



**34850**      **34950-20**      **34900**      **34950-10**      **34800**

MODEL	COATING	ACCURACY
34850 ATP2S Style Sliding Prism	Silver	3 arc sec
34950-20 A7 Style Prism 5/8" Thread Mount	Silver	3 arc sec
34900 Trimble Style RTS/RPT Prism	Silver	5 arc sec
34950-10 A7 Style Prism with RC mount	Silver	3 arc sec
34800 ATP1 Style	Silver	5 arc sec



**34500-RTS2**  
The 7 prisms are ground to exacting standards. Ideal for short range ATR/RTS applications.



**34000**      **34000-50**      **34000-200**



**34500-200**



**34500-100**



**34500-300**



**34122-BASIC**



**34122-10-PRO**



**34500-25**



**34500**      **34500-10**

Model	Coating	Accuracy
34500-RTS2 Swiss Style 360 7-Face Mini Prism	Copper	1.5 arc sec
34000 360° Swiss-Style 360 Prism Assembly	Copper	2 arc sec
34000-50 Swiss Style 360° High-Accuracy Prism	Copper	2 arc sec
34000-50-200 Swiss Style 360 Monitoring Prism w/L-Bar	Copper	2 arc sec
34500-200 Swiss Style 360 Mini Prism With L-Bar Mount	Copper	2 arc sec
34500-100 Swiss Style 360 Mini Prism with Height Adapter	Copper	2 arc sec
34500-300 Swiss Style 360 Mini Prism with Mounting Frame	Copper	2 arc sec
34122-10-BASIC Swiss Style 360° Prism with 5/8" Thread	Copper	2 arc sec
34122-10-PRO Swiss Style 360 Pro Prism with 5/8" Thread	Copper	2 arc sec
34500-25 Swiss Style 360 Mini Prism Circular level 1/4"	Copper	2 arc sec
34500-RTS2 Swiss Style 360 7-Face Mini Prism	Copper	2 arc sec
34500-10 Swiss-Style with 5/8 Adapter and Site Pole	Copper	2 arc sec

3490-55



3490-100



3490-50

Omni's **3490-100** Reflective Magnetic 1.5 inch Sphere has a hardened surface for durability. Includes a magnetic mounting base to hold the prism on any iron surface, and a centering pin to locate the center of the ball.

Our High Precision **SMR Laser Trackers 3490-50** and **3490-55** can be used interchangeably with most laser tracker systems FARO, API, and other laser trackers.

2901



Magnetic Drifting Nest for 1.5" Spherically Mounted Retro-Reflector (SMR) with 25.4mm offset.

Model	Sphere Diameter	Roundness Error	Range
3490-50	1.5 inch/38.1mm Dia.	0.002mm	55m
3490-55	0.5 inch/12.7mm Dia.	0.002mm	30m
3490-100	1.5 inch/38.1mm Dia.	0.002mm	1000m

**NEW**  
34900-Kit

### 1.5" Prism Ball Reflector Kit

Omni's Reflective Magnetic 1.5inch Sphere 34900-Kit has a hardened surface for durability and can be mounted to any iron surface with any angle. The kit includes magnetic mounting bases to hold the prisms on any iron surface, centering pins to locate the center of the balls, and different adapters to suit your needs.

The kit includes:

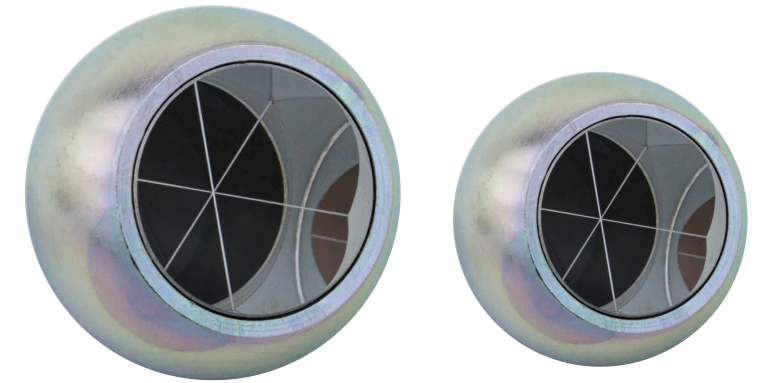
- Copper Coated Ball Reflector x5 (3490-100)
- Drift Nest x5 (2901)
- Drop-in Anchor x5
- Nylon Mount x5
- Tripod Adapter x1
- Adapter for Self-tapping Screw x5
- Mark Sticker



# SPHERES & MAGNETIC BASES

3490-25

3490-15

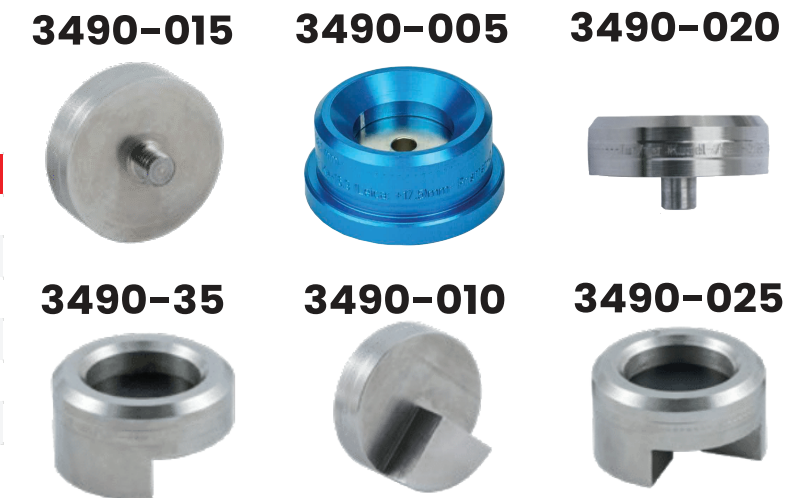


- Housing material: Magnetic stainless steel ( $\varnothing \pm 0.03$  mm)
- Surface: Hardened, matt polished
- Reflective surfaces: Silver mirrored triple prism

Model	Sphere Diameter	Coating
3490-25	1.5 inch/38.1mm Dia.	Silver
3490-15	1.18 inch/30mm Dia.	Silver

### Magnetic Bases for 1.5" Sphere

Model	Description
3490-015	Magnetic Base w/Outer Thread M8x8mm
3490-005	Magnetic Ball Prism Base - 40mm Dia
3490-020	Magnetic Base For Measuring Bore Holes
3490-35	Magnetic Ball Base w/Semi-circle
3490-010	Magnetic Ball Base "Contour"
3490-025	Magnetic Base w/Outer Corners



### Magnetic Bases for 1.18" Sphere

Model	Description
3490-110	Base with magnet
3490-120	Magnetic Base with M8 Inner Thread
3490-130	Base with M8 Outer Thread





# MONITORING PRISMS



Model	Prism	Description
3405-M*	25.4mm	L-Bar with Magnetic Base
4175	38.1mm	Quick Release w/Aluminum Base
3490-040	25mm	Prism in Protective Case

\*Also available in silver coating



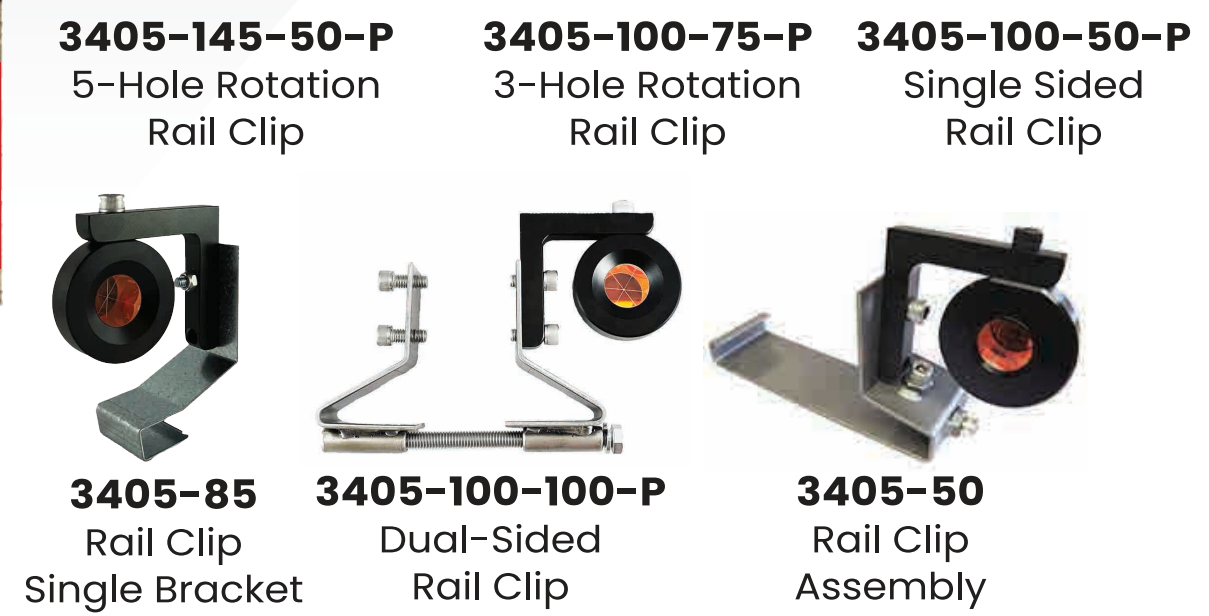
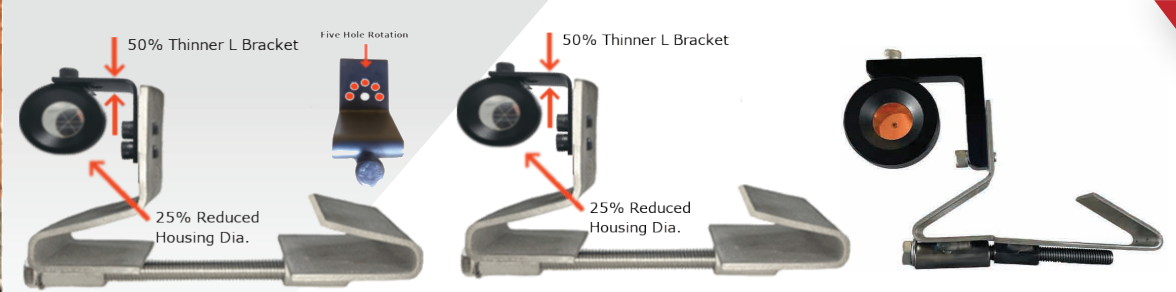
Model	Prism	Description
3405-30	12.7mm	Mini L-Bar Assembly
3405*	25.4mm	L-Bar Assembly
3405-25*	25.4mm	9" Long Arm Assembly
3405-05*	25.4mm	Prism with High Visibility Ring
3405-10-D*	25.4mm	Dual Sided Prism
3405-RED*	25.4mm	Metalic Red Assembly
3405-RH*	25.4mm	Prism with Rain Hood
3405-20*	25.4mm	Prism with Rain Hood
34300*	25.4mm	Rotatable 360° Bracket

\*Also available in silver coating

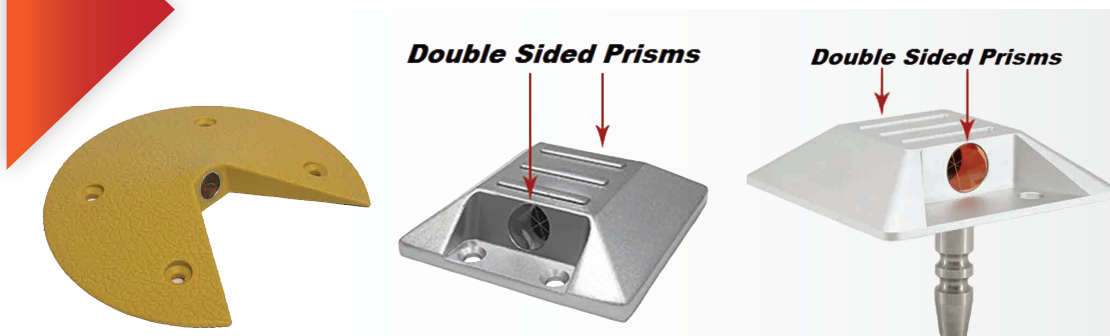


Model	Prism	Description
3480-01**	62mm	Prism with Rain Hood Assembly
3480-10	62mm	Tilttable Arm with Weather Hood
34100	62mm	Swiss-Style Nitrogen Filled

\*\*Also available uncoated



All rail clips with L-bars available in copper and silver coating



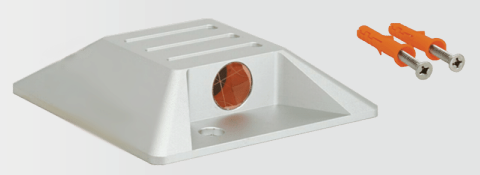
3350-05	12.7mm Road Prism - Copper
3350-35*	17.8mm Double Sided Road Prism
3350-35*	17.8mm Double Sided Prism

\*Available in copper and silver coating

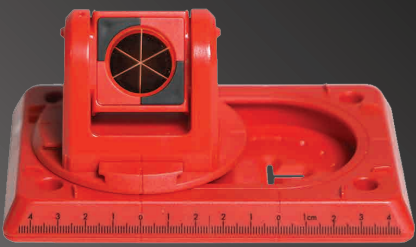


Our new rail angle **3480-10-10** allows for exact measurement of the track position. The reference point (running edge) to be measured is located on the inside of the rail. The set-up can be carried out standing up, especially when there are a large number of points to be measured.

## ROAD PRISMS



3350-30*	17.8mm Single sided Road Prism
----------	--------------------------------



The **3395-C** and **3395-S** Stake Out Aid for Robotic Total Stations is an innovative new solution for staking out measuring points quickly and accurately on horizontal or vertical surfaces. After reaching the point to be measured, the particular measuring point is revealed directly below the prism by simply sliding the prism from position A to position B and vice versa, and can be marked directly via a cavity in the base plate. Available in copper and silver coating.

**NEW**



The **3355** is the best option for surveying fixed points using a GNSS antenna when an accuracy of less than 1 cm is sufficient. The reference points are then used with a total station, laser scanner, drones, and other instruments. The system allows multiple mounting options such as glue, screw, magnet, etc. Fixed points can also be measured on vertical objects, like walls, using tilt GNSS



The best measurement results are achieved when the prisms are aimed manually. With the 3385 (Magnetic) and the 3390 accuracies in the range of  $\pm 1$  mm are possible, enabling reference points to be located from virtually any direction.

Model	Color	Coating
3385-G-C	Gray	Copper
3385-G-S	Gray	Silver
3385-R-C	Red	Copper
3385-R-S	Red	Silver

Model	Color	Coating
3390-G-C	Gray	Copper
3390-G-S	Gray	Silver
3390-R-C	Red	Copper
3390-R-S	Red	Silver



**360° Tiltable Prisms**

Model	Type	Color	Coating
3375-M-C	Magnetic 360°	Gray	Copper
3375-M-S	Magnetic 360°	Gray	Silver
3375-R-C	Magnetic 360°	Red	Copper
3375-R-S	Magnetic 360°	Red	Silver
3380-C	360°	Gray	Copper
3380-S	360°	Gray	Silver
3380-R-C	360°	Red	Copper
3380-R-S	360°	Red	Silver



**Tiltable Prisms**

Model	Type	Color	Coating
3365-M-C	Tilt Magnetic	Gray	Copper
3365-M-S	Tilt Magnetic	Gray	Silver
3365-M-R-C	Tilt Magnetic	Red	Copper
3365-M-R-S	Tilt Magnetic	Red	Silver
3365-C	Tilt system	Gray	Copper
3365-S	Tilt system	Gray	Silver
3365-R-C	Tilt system	Red	Copper
3365-R-S	Tilt system	Red	Silver



**3320-0050**  
12.7mm Angled Mini Prism



**3320-0100**  
12.7mm Dual Mini Prism



**3320-05**  
12.7mm Angled Retro Mini Prism



**9000-C-LPF Landslide Detection Prism**

Omni's Low Pass Filter Prism is Lidar Technology compatible, 2 arc second prism, low pass filter proprietary design, hermetically sealed, copper coated with anti-reflective coating. This prism is designed to maintain high performance in the harshest conditions, including blocking the light as fast as possible above 800nm.



Model	Prism	Accuracy	Coating	Filling	Description
9000-C-LPF*	62mm	2 arc sec	Copper	N/A	Landslide Detection Prism
1005	73mm	2 arc sec	Uncoated	N/A	Double Sealed Lexan Canister
9500*	64mm	<5 arc sec	Copper	N/A	All-Metal Canister
3435	62mm	2 arc sec	Copper	N/A	Swiss-Style Prism + Holder Set
3410	62mm	2 arc sec	Copper	N/A	Swiss-Style Prism
3410-10	62mm	2 arc sec	Uncoated	N/A	Swiss-Style Strobe Prism
7000-O	62mm	2 arc sec	Uncoated	N/A	High-Accuracy Strobe Prism
3400	62mm	2 arc sec	Copper*	Nitrogen	Nitrogen Filled Canister
9000	62mm	2 arc sec	Uncoated	N/A	Advanced Precise Prism
1100-C-O	62mm	<4 arc sec	Copper*	N/A	Sealed Canister
1100-C-O-N	62mm	<4 arc sec	Copper*	Nitrogen	Nitrogen Filled Canister

\*Silver coating/uncoated options available

## 21000

### 25 Piece Prism Set w/Case

The 21000 comes with 25 monitoring mini prisms, adapters, and hard case. The prisms are designed to withstand harsh conditions and long term use in monitoring projects. The body of the prisms are adjustable on two axis. The locking mechanism prevents accidental prism rotation and is compatible with Swiss-style make tips and quick release adapters.



# MINI PRISMS



Model	Prism	Bottom	Coating Options
200	25.4mm	5/8" and Quick Release	Copper / Silver / Uncoated
210	25.4mm	Quick Release	Copper / Silver / Uncoated
220	25.4mm	Quick Release and base	Copper / Silver / Uncoated
1600	25.4mm	5/8"	Copper / Silver / Uncoated
34015	25.4mm	Quick Release	Copper / Silver / Uncoated
1680-10	25.4mm	5/8"	Copper / Silver / Uncoated

### MINI PRISM WITH POLE ASSEMBLIES



## 9300 Series

Our advanced all metal prism assemblies are simply the best in the market. Featuring a front lever locking mechanism, dual-sided aluminum target, and aircraft grade aluminum yoke and holder

Model	Prism	Accuracy	Yoke	Coating
1210	62mm	2 arc sec	Aluminum	Uncoated
1210-C	62mm	2 arc sec	Aluminum	Copper
1210-S	62mm	2 arc sec	Aluminum	Silver
1200	62mm	2 arc sec	Polycarbonate	Uncoated
1250	73mm	2 arc sec	Polycarbonate	Uncoated

Model	Prism	Accuracy	Description
9300-C-0	62mm	2 arc sec	Uncoated
9300-C-C	62mm	2 arc sec	Copper
9300-C-S	62mm	2 arc sec	Silver
9300-C-C-N	62mm	2 arc sec	Nitrogen Sealed
9300-C-FS-0	62mm	2 arc sec	Flashing Strobe



## 1200 Series



Model	Prism	Accuracy	Description	Coating
19300-C-0	64mm	<5 arc sec	All Metal	Copper/Silver
19300-C-C	64mm	<5 arc sec	All Metal	Copper/Silver
1215-10	62mm	2 arc sec	All Metal	Uncoated
1205	62mm	2 arc sec	All Metal	Uncoated
4800	62mm	2 arc sec	3-Phase Lighted Target	Uncoated
9225	62mm	2 arc sec	Polymer/Aluminum	Uncoated
3465	62mm	2 arc sec	All Metal	Copper/Silver



Model	Prism	Accuracy	Description	Coating
34037	62mm	1 arc sec	All Metal	Copper
34037-50-0	62mm	1 arc sec	All Metal	Copper
34040	62mm	2 arc sec	Polymer	Copper
1020	73mm	2 arc sec	Polymer/Aluminum	Uncoated
34600-PRO	62mm	2 arc sec	All Metal	Copper
3437	62mm	2 arc sec	Reinforced Polymer	Copper



**NEW**

### 34600-PRO-T-50

Our Precision Traverse Prism Set includes GDF321 High Precision Tribrachs that offer a very stable, smooth, and robust feeling. It also comes with the GZR3 carrier with optical plummet. This carrier is a great solution for precisely leveling up tribrachs without built-in plummets. Compatible with Swiss-style instruments.

Omni's **34037-T-80** and **34037-80-T** Swiss-style Traverse Sets come with prisms that are precision grounded to exacting standards. They also have anti reflective and copper coating. The tribrach is very stable, smooth, and robust feeling. They come with the 2280-LG Swiss-style carrier with optical plumb.



**34037-T-80 34040-80-T**

## TRAVERSE SETS



**34037-T-50**



**34040-50-T**

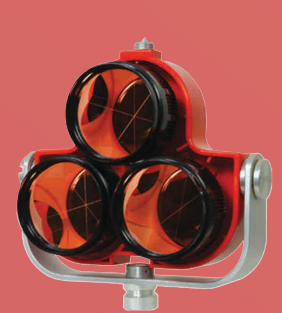


**9300-10-T**



**9125-10-T**

## PRISM CLUSTERS



**1480**



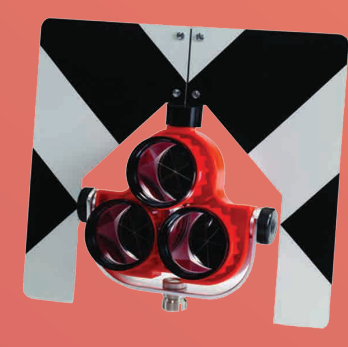
**1300**



**8080**



**8000**



**1475**



## REFLECTORS



**205**

**215**



**3335 & 3340**

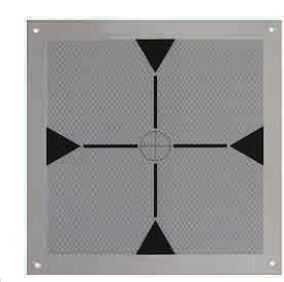
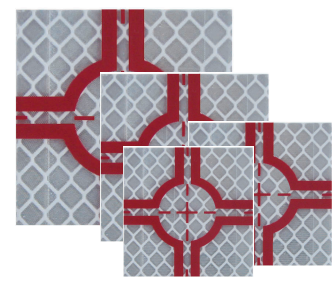


**3330**

Omni's **205** and **215** tilting reflectors were designed to withstand harsh conditions and long term use. The body is adjustable on two axes and they feature 60mm reflective areas for a range of up to 492ft (150m).

Model	Type	Color	Target
3335-M-G	Magnetic 360°	Gray	30mm
3335-M-R	Magnetic 360°	Red	30mm
3340-G	360°	Gray	30mm
3340-R	360°	Red	30mm
3330-G	Tilt system	Gray	30mm
3330-R	Tilt system	Red	30mm

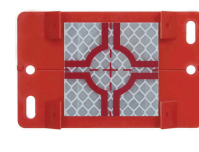
### RSZ & RSM



**RSALU22**



**RSAK130**



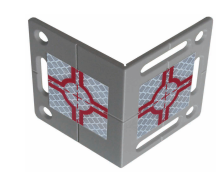
**RSAKZ6**

Model	Adhesive Size
RSZ2	20x20mm
RSZ3	30x30mm
RSZ4	40x40mm
RSZ5	50x50mm
RSZ6	60x60mm
RSZ10	100x100mm

Model	Magnetic Size
RSM4	40x40mm
RSM5	50x50mm
RSM6	60x60mm
RSM10	100x100mm



**RSAK80**



**RS80**



**RS90**

Model	Size
RSALU22	220X220mm
RSAK130	30x30mm
RSAKZ6	60x60mm
RSAK80	40x40mm
RS80	40x40mm
RS90	40x40mm

# DRONE TARGETS



## AP-10PK Propeller AeroPoints

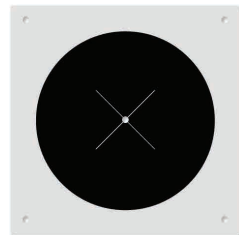
Each AP-10PK AeroPoint is a portable, reusable ground control point that repeatedly records positioning data while your drone flies. They are durable and lightweight with simple one-touch operation. They are compatible with any GPS-enabled drone, including units with RTK capability. Available in units and 5/10 packs.

- AeroPoints' in-built GPS only needs 45 minutes of activation
- Lightweight and durable with simple one-touch operation
- AeroPoints can be placed around a survey area in minutes
- Works with any GPS-enabled drone model, including those with onboard RTK



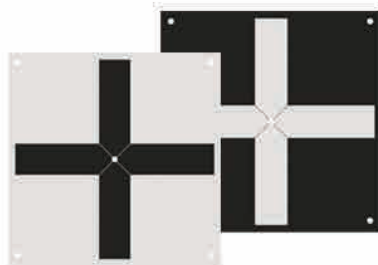
## RSL-X90M (magnetic)

Laser Scanner Targets excellently suited to most scanners. They work as fixed points for connecting several positions. They allow allocation of spatial reference information to a geospatial dataset.



## RSL402

Laser scanner and drone sign, printed on both sides (grey-white / black-white), 400 x 400 mm, for long range scanning.



## RSL520

These are one-side printed 350x350mm waterproof targets. They can be fixed to the ground with tent pegs, and they are ideal for use up to a height of approx. 100 meters.

## RSL512

These 350x350mm waterproof targets are printed on both sides. They can be fixed to the ground with tent pegs, and they are ideal for use up to a height of approx. 100 meters.

# SCANNER ACCESSORIES

4130



100m Scanner Sphere with 52mm copper coated prism and 5/8" threaded bottom.

4120-10



100m Scanner Sphere with 52mm copper coated prism and quick release adapter.



4115-30  
100mm Scanner Sphere



4125-60  
145mm Scanner Sphere



4150-00  
6 Piece 145mm Scanner Sphere Set w/ Hard Case and Magnetic Base



4150-20  
10 Piece 100mm Scanner Sphere and Magnet Kit in Hard Case



4210



4165 / 4170

	Diameter	Back side	Mount
4210	6"	Black	5/8"
4165	4.5"	White	Quick Release
4170	4.5"	Reflective	Quick Release



4125-00  
6 Piece 100mm Sphere Kit with Soft Case

NEW



4211  
118x108mm Target with Magnetic Base



RSL496  
120mm Foldable Laser Scanner Target



RSL301  
200x150mm Self-Adhesive Laser Scanner Target

# TRIPODS

33100



## Collapsible Antenna All Carbon Fiber Tripod

Omni's GNSS "All Carbon Fiber" Collapsible Antenna Tripod is made of 100% Toray carbon fiber material utilizing a new weaving process which provides greater strength and is lighter weight. Its Collapsible 2m center staff rotates 360 degrees for calibration at 2m, 1.8m, and 1.5m with steel locking pin. Heavy Duty Reinforced Transport Carry Case included



3000-10

17090-100

3000

## Collapsible Antenna Aluminum Tripod

Omni's **3000** GPS/GNSS precision collapsible antenna tripod features a center staff that rotates 360-degrees to check calibration for plumbing with built-in 8 minute bubble vial. It also has a rotatable head with removable 5/8 x 11 adapter and an on board compass. The extendable tripod legs and the pole are powder coated and feature replaceable tips.

## Aluminum Tripod with Antenna Mast

Omni's **3000-10** is designed to be easily adjustable to set a radio antenna at the desired height.

- Mast telescopes to 7.5 ft (2.3 m) and tripod can be set to 5.5 ft (1.7 m) for a total elevation of 13 ft (4 m)
- The mast is aluminum with a male 5/8 x 11 threaded tip
- Constructed from aircraft grade aluminum

## Antenna Mast Wood/Fiberglass Tripod

The **17090-100** Fiberglass Tripod with Aluminum GPS/GNSS Antenna Mast features:

- Aluminum, male 5/8 x 11 threaded tip
- Telescopes extend to 7.5 ft (2.3m)
- Tripod can be set to 5.5 ft (1.7 m)
- Total elevation: 13 ft (4 m)



17045

## Heavy Duty Elevator Tripod

Omni's 17045 is equipped with a 5/8 x 11" threaded adapter for fast mounting of instruments. The legs and dowels are constructed of durable fiberglass, which ensure, strength and resistance to adverse weather conditions.

- Fully-extended leg and center column height of (3.80m/12.4ft) and a collapsed height of (1.82m/5.97ft)
- Adjustable precision center column provides the tripod (1.12-m/3.69ft) of movement
- Removable round head with a 5/8 x 11 stud
- Column can hold 30kg when fully collapsed, and 7 kg when elevated
- Dual locking system includes both twist locks, and quick release clamps, along with dual metal and rubber leg points create outstanding stability
- Also includes a leg straps
- Orange or Black Hardware

NEW



17036

## Premier Carbon Fiber Tripod

The **17036** was specifically designed for use with 3D laser scanners. A 60mm-wide rubber pad ensures maximum stability on any surface. The integrated ball allows the large rubber foot to swivel until it's fully in contact with the ground, regardless of the leg angle or the type of surface it is placed on.

- Extremely light and robust tripod made of 100% carbon fiber
- Large top plate for secure mounting of instruments with 5/8" threaded brass stud
- G-lock Ultra for secure leg-locks and quick operations
- 4-section tripod legs
- Detachable combi tripod feet and can easily be transformed into spike or rubber feet





**17035**  
All-Carbon  
FiberTripod  
for 3D Scanner



**NEW**

**17040**  
Heavy Load Tripod  
for API Laser Trackers,  
3-1/2-8 UNC-2A



**31775CDC**

**Heavy Duty Carbon Fiber Tripod**

Omni's 31775CDC highly stable tripod provides excellent stability and durability for Robotic, Scanning, and Leveling applications.

- Large round head aluminum (6.5"/165mm dia)
- Standard 5/8" threaded brass stud will accommodate most instruments
- Dual locking design adds extra stability
- Stainless steel-brass hardware
- Retaining system hardware keeps legs in place and from unnecessary movement
- Heavy duty poly-webbing shoulder strap making transport easy



**3055**  
Carbon Fiber and  
Aluminum  
Thumb-Release GPS  
Tripod



**8950**  
Aircraft Grade  
Aluminum Thumb  
Release Prism  
Pole Tripod



**31705-DC**



**1705-DC &  
1775DC**

	Material	Head	Lock
<b>31705-DC</b>	Fiberglass	Round	Dual
<b>1705-DC</b>	Fiberglass	Flat	Dual
<b>1775DC</b>	Wood/Fiberglass	Round	Dual



**1722**  
Aluminum Heavy  
Duty Mini Tripod



**NEW**

**8941**  
Universal Tripod for  
Laser Scan Targets



**33050**  
All-Carbon Fiber  
Mini Tripod



**1725DC**



**1720-10 &  
1720**

	Material	Head	Lock
<b>1725DC</b>	Aluminum	Flat	Dual
<b>1720-10</b>	Aluminum	Round	Clamp
<b>1720</b>	Aluminum	Flat	Clamp

**MINI  
TRIPODS**

# BIPODS

The 33045 prevents crushing of your carbon fiber or aluminum prism poles and allows surveyors to set up a freestanding prism pole or GPS pole. Poles with 1.5 inch (3.81cm) outside diameter can attach easily through the top of the open clamp. Bipod extends to 6 feet (1.8m) and collapses to 42.6 inches (108cm).



9845-TR

## Thumb Release Aluminum Prism Pole Bipod

Our bipod is constructed from aircraft grade aluminum for durability and reliability. Extends to 1.7m (67in) and collapses to 1.1m (43in). Fits all GPS antenna and prisms poles with a 1" (2.54 cm) to 1.25" (3.18cm) outside diameter. Premium polyester-urethane coating for durability

## Thumb Release Anti-Crush Head Carbon Fiber Bipod



33045

## Bipod for Leveling Rod/Barcode Rod

This leveling rod bipod is constructed of aircraft grade aluminum. It features a unique head that makes it compatible with rectangular rods. The adjustable head will fit rods with width between 1.57 and 2.56 inches.



15217-21

# MINI BIPODS



33040

Mini Bipod Carbon Fiber



9843

Thumb Release Mini Bipod Aluminum

# POLES & RODS

## All-Carbon Fiber with Quick Clamp Pole Series

Omni's 32000 All-Carbon-Fiber Series have permanent wear-resistant grads with special process. They are made of 100% Toray carbon fiber filament for high robustness and less weight. The Quick Clamp Lock provides extra security at height. They offer quick conversion to other applications by using interchangeable tips.\*

Innovative and functional Quick Clamp Lock System



Interchangeable tips to easily switch applications (sold separately)



Model	Length	Sections	Material	Type	Tip	Grad
32075	15ft/4.6m	4	All-Carbon Fiber	Quick Clamp	Adjustable*	Dual
32036	12ft/3.6m	3	All-Carbon Fiber	Quick Clamp	Adjustable*	Dual
32039	8ft/2.6m	2	All-Carbon Fiber	Quick Clamp	Adjustable*	Dual

\*Tips: Precise Tip (32001-10), Fixed Tip (32001-20), Swiss-Style (32001-30), and GNSS (32001-40)

## All-Carbon Fiber Prism Pole Series

Omni's All-Carbon Fiber Series Poles inner and outer poles are made from the new generation Toray Carbon fiber material.

- Special weaving process provides extra strength and light weight
- Adjustable 5/8"-11 brass tip
- Soft rubber knob provides precision tightening or loosening of twist lock system
- Built-in 20-minute level vial
- Rugged nylon carrying case with shoulder strap

Model	Length	Sections	Material	Type	Tip	Grad
33027-PT	15ft/4.6m	4	Toray Carbon Fiber	TwissLoc	Precise Tip	Dual
33026-PT	12ft/3.6m	3	Toray Carbon Fiber	TwissLoc	Precise Tip	Dual
33025-PT	8ft/2.6m	2	Toray Carbon Fiber	TwissLoc	Precise Tip	Dual

## Non-Conductive Fiberglass Prism Pole Series

Omni's 9700 Series prism poles are manufactured to be very lightweight and non-conductive. The TwissLoc mechanism was redesigned to reduce weight while keeping the lock firmly secure.

- Fiberglass prism pole
- Includes removable point with Topo Boot
- 40-min adjustable vial
- Adjustable Tip (5/8 x 11)p

Model	Length	Sections	Material	Type	Tip	Grad
9739-NC	15ft/4.6m	3	Fiberglass	TwissLoc	Precise Tip	Dual
9736-NC	12ft/3.6m	3	Fiberglass	TwissLoc	Precise Tip	Dual
9775-NC	8ft/2.6m	3	Fiberglass	TwissLoc	Precise Tip	Dual



## GNSS Poles / Rover Rods

### Adjustable Height

#	Model	Length	Material	Type	Tip	Grad
1	32100	6.6ft/2m	All-Carbon Fiber	Quick Clamp	Fixed	Dual
2	32150	6.6ft/2m	All-Carbon Fiber	Compression	Fixed	N/A
	3020-70	6.6ft/2m	Carbon Fiber	Snap-Lock	Fixed	10ths
	3020-60	6.6ft/2m	Carbon Fiber	Snap-Lock	Fixed	N/A
3	3020-50	6.6ft/2m	Carbon Fiber	Snap-Lock	Fixed	N/A
	3020-30	6.6ft/2m	Aluminum	Snap-Lock	Fixed	10ths
	3020-20	6.6ft/2m	Aluminum	Snap-Lock	Fixed	N/A



1 2 3

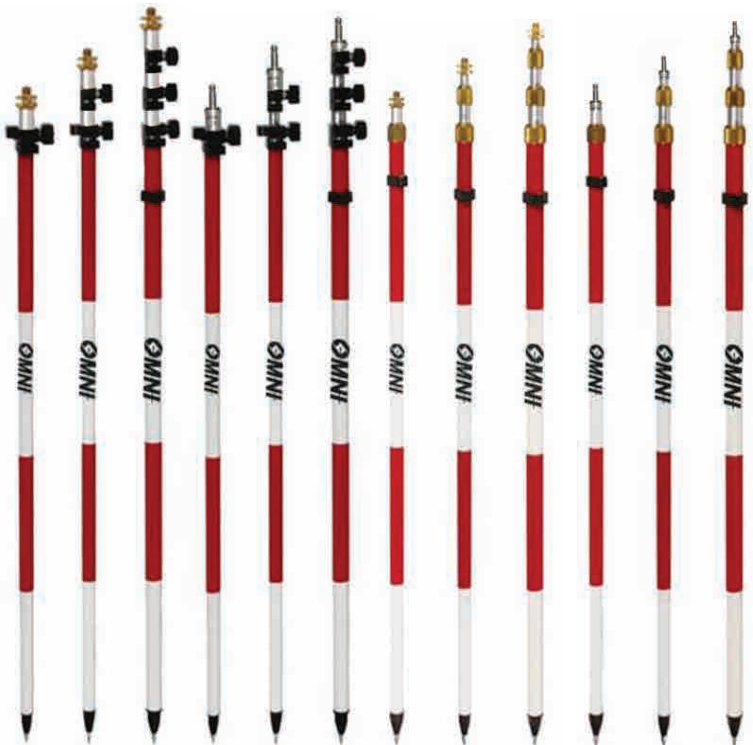
### Fixed Height

#	Model	Length	Material	Type	Tip	Grad
4	3020	6.6ft/2m	Carbon Fiber	Fixed Height	Fixed	N/A
5	3022	6.6ft/2m	Aluminum	Fixed Height	Fixed	N/A
6	3024-10	6.6ft/2m	Carbon Fiber	Fixed Height	Fixed	N/A



4 5 6

## Aluminum Prism Pole Twiss Loc and Compression Series



Model	Length	Type	Tip	Grad
9839-PT	15ft/4.6m	TwissLoc	Precise Tip	Dual
9836-PT	12ft/3.6m	TwissLoc	Precise Tip	Dual
9875-PT	8ft/2.6m	TwissLoc	Precise Tip	Dual
9839-LT	15ft/4.6m	TwissLoc	Swiss-style	Dual
9836-LT	12ft/3.6m	TwissLoc	Swiss-style	Dual
9875-LT	8ft/2.6m	TwissLoc	Swiss-style	Dual
8937-PT	15ft/4.6m	Compression	Precise Tip	Dual
8931-PT	12ft/3.6m	Compression	Precise Tip	Dual
8970-PT	8ft/2.6m	Compression	Precise Tip	Dual
8937-LT	15ft/4.6m	Compression	Swiss-style	Dual
8931-LT	12ft/3.6m	Compression	Swiss-style	Dual
8970-LT	8ft/2.6m	Compression	Swiss-style	Dual

# MINI POLES



#	Model	Length	Material	Type	Tip	Grad
1	9826-PT	5.1ft/1.6m	Aluminum	TwissLoc	Precise Tip	Dual
2	9825-PT	1.8ft/0.6m	Aluminum	TwissLoc	Precise Tip	Dual
3	9825-LT	1.8ft/0.6m	Aluminum	TwissLoc	Swiss-style	Dual
4	32025-10	2.3ft/0.7m	All-Carbon Fiber	Quick Clamp	Precise Tip	Metric
5	32025-20	5.1ft/1.6m	All-Carbon Fiber	Quick Clamp	Precise Tip	Dual

## Leveling Rods

Model	Length	Material	Type	Grad
3210	25ft/7.6m	Fiberglass	Snap-Lock	10ths
3211	25ft/7.6m	Fiberglass	Snap-Lock	8ths
3214	16ft/4.9m	Fiberglass	Snap-Lock	10ths
3215	16ft/4.9m	Fiberglass	Snap-Lock	8ths
3100	16ft/4.9m	Aluminum	Snap-Lock	10ths
3101	16ft/4.9m	Aluminum	Snap-Lock	8ths
3110	13ft/4m	Aluminum	Snap-Lock	10ths
3111	13ft/4m	Aluminum	Snap-Lock	8ths

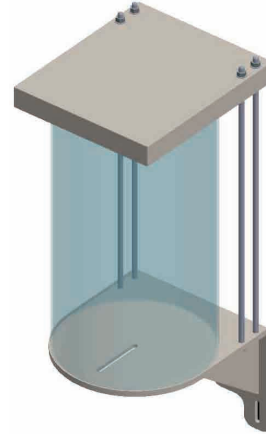


**6475 Heavy Duty Height-Adjustable Security Cage**  
 The **6475** has been designed to protect AMTS equipment. The height of the cage can easily be adjusted allowing for an internal height ranging between 16" and 25". Our cage is built completely in aerospace grade stainless steel to endure weather conditions and exposure to elements.

# SECURITY & MOUNTS



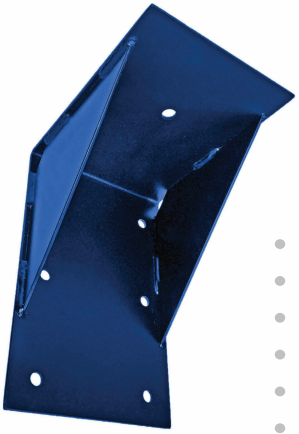
**6300**  
Weather Protective Cover For AMTS Monitoring



**6450-200**  
Adjustable Mounting Bracket w/Cover



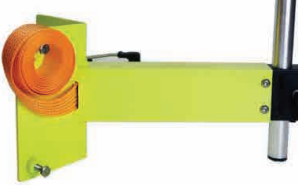
**6455**  
Wall/Column Adjustable Bracket



**6425**  
AMTS Wall Mount for Total Station



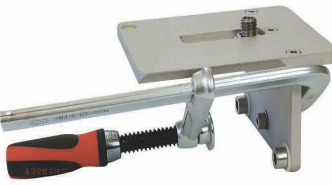
**6460**  
Instrument Column Clamp



**6465**  
Heavy-Duty Column Clamp



**6450**  
Batter Board Clamp Holder



**6475**  
Batter Board Instrument Holder



**3075**  
Magnetic Mount 5/8"

**3073**  
Magnetic Mount w/ Quick Release Adapter

# ADAPTERS & TRIBRACHS



**2280-LG**  
Swiss-style  
Carrier with  
Optical Plummet



**2265-LG**  
Swiss-style  
Carrier with  
Spigot



**2285-LG**  
Swiss-style  
Carrier with  
Optical Plummet



**2250-EY**  
Adapter with  
Optical Plummet  
**2255-EY**  
Adapter without  
Optical Plummet



**2250-GY**  
Adapter with  
Optical Plummet  
**2255-GY**  
Adapter without  
Optical Plummet



**22275-BK**  
Tribrach with  
Laser Plummet



**22225-ELG**  
Tribrach with  
Optical Plummet  
**22230-ELG**  
Tribrach without  
Optical Plummet



**22225-BK**  
Tribrach with  
Optical Plummet  
**22230-BK**  
Tribrach without  
Optical Plummet



**22225-Y**  
Tribrach with  
Optical Plummet  
**22230-Y**  
Tribrach without  
Optical Plummet



**22225-GY**  
Tribrach with  
Optical Plummet  
**22230-GY**  
Tribrach without  
Optical Plummet



**22010**  
Tribrach Adapter  
for TX5/FARO3D



**22225-1000**  
Tribrach Adjuster  
with Bubble Level



**2215**  
Zeiss Type  
Tribrach Adapter



**2210**  
Rotating Tribrach  
Adapter



**3980**  
Tilt Monument  
Mount  
5/8 Male x 11TPI



**3960**  
Tilt Monument  
Mount  
MPT 3-1/2 X 8 TPI



**3940**  
Tilt Monument  
Mount  
MPT 2 X 11-1/2 TPI



**3920**  
Tilt Monument  
Mount  
MPT 1-1/2 x 11-1/2 TPI



**2225-7500**  
AD-12 Self-Leveling  
Tribrach for Laser  
and Surveying  
Instruments



**22285**  
High Accuracy  
Tribrach with  
Swiss-Style



**22295**  
High Accuracy  
Tribrach with  
5/8" Thread



**22290**  
High Accuracy  
Tribrach with 1.5"  
Sphere Mount

# INSTRUMENT BRACKETS



**37019**  
Data Collector and  
Pole Clamp



**37035-10**  
Controller Bracket with  
Pole Clamp



**37018**  
Ball and Socket  
Pole Clamp

# BACKPACKS & BAGS



**22022**  
Top-Loading  
Robotics Backpack



**82021**  
Top-Loading  
Heavy-Duty  
Backpack



**82020**  
Front-Loading  
AMTS Backpack



**88125**  
GIS Backpack



**3030**  
GPS/GIS Receiver  
Backpack



Prism Bags

**Model Dimensions**

81090	15"x8"x2"
81086	10"x9.5"x3"
81085	9"x7"x2"
81080	7"x7"x4"



**88092**  
24" Wood Stake Bag

**88090**  
18" Wood Stake Bag



**88142**  
Controller Bag



**88154-11**  
Tripod Bag



**8216**  
48" Lath Carrier

**8212**  
36" Lath Carrier



**88160**  
Pole Carrier

# TAPES AND MEASURING WHEELS



**OTRS Series**



**NR Series**



**SNR Series**

Model	Lengths	Housing	Blade
OTRS Series	100ft/200ft/300ft/330ft	Fiberglass	Double PVC Coated Fiberglass Blade
NR Series	100ft/165ft/200ft/30m/50m/60m	Polycarbonate	Multi-layer steel blade
SNR Series	100ft/200ft/300ft/100m	Stainless Steel	Nylon-reinforced steel blade



**MP401E**



**MP401**



**RR112**

Model	Units	Diameter	Circumference
MP401 with Mechanical Clicker	Ft	15 1/2"	4'
MP401E with Electronic Brain	Ft/10th/Metric	15 1/2"	4'
RR112 with Magnified Counter	Ft/In	4"	1'

# MISCELLANEOUS



Model	Compatibility
8919-50	Zeiss 360° Prism (50mm)
8919-73	Topcon 360° prism (35mm height)
8919-80	Mini Prisms (80mm height)
8919-35	Prism Assemblies (35mm height)
8919	Trimble RMT (15mm height)
34000-06	Swiss-Style GPH1 (50mm height)
8920	Swiss-style Precision tip (86-125mm)
9872	5/8 Precision Tip (50-135mm)
11R5-W-VA	M8x30 - Stainless Steel
11R5-W	Adapter M8x30 - Brass



**RSMK-FIX**      **RS-222-5**

The **RSMK-Fix** Adhesive is a powerful construction glue with immediate initial adhesion. Its formula free from isocyanate and silicone is also odorless. Permanently elastic and suitable for a wide range of uses and it can be applied using all common dosing pistols.

The **RS-222-5** das Curb Marker Adhesive provides a permanent bond to concrete, asphalt, metal, or just about any flat non-soil surface. It will remain resilient and withstand freeze-thaw conditions without loss of adhesion for years.

The **RSSV-X90** Suction Cup Target Mounting base is a 120 mm version for mounting for all Rothbucher products with magnetic base. It works on all glass and smooth surfaces, both indoors and outdoors. It has a pump function that allows the suction cup to be firmly attached to the surface.



**RSSV-X90**

The **RSFP-X90** Stainless Steel Fixed Point for prisms and targets with magnetic base allows to place prisms and targets back at exactly the same place as originally positioned. By simply gluing or screwing the recovery point onto the intended surface. It can be placed (glued/screwed) on non-metallic surfaces like wood, stone, and concrete.



**RSFP-X90**



**9901**      **8912**      **8911**

Model	Size
9901	Prism Pole Point
8912	Wide Base Topo Shoe
8911	Topo Shoe



**2221-10**      **2221-20**      **2221-30**

Model	Description
2221-10	Tripod adapter for Trimble X7
2221-20	Tripod adapter for Swiss-style RTC360
2221-30	Tripod adapter for ATS/Faro Quick Release



**GAD31**  
Screw-to-stub  
Adapter



**Plumb Bobs**

Model	Size
2052	12oz
2054	14oz
2056	16oz
2058	18oz
2060	24oz



**Sheats**

Model	Size
2066	10-12oz
2068	14-18oz
2070	24-32oz



**Centering Plates**

Model	Size
3810	40mm
3815	60mm